



# AUCTION

LEADING THE INDUSTRY SINCE 1945

**Saturday – October 28, 2017 – 2:00 PM**

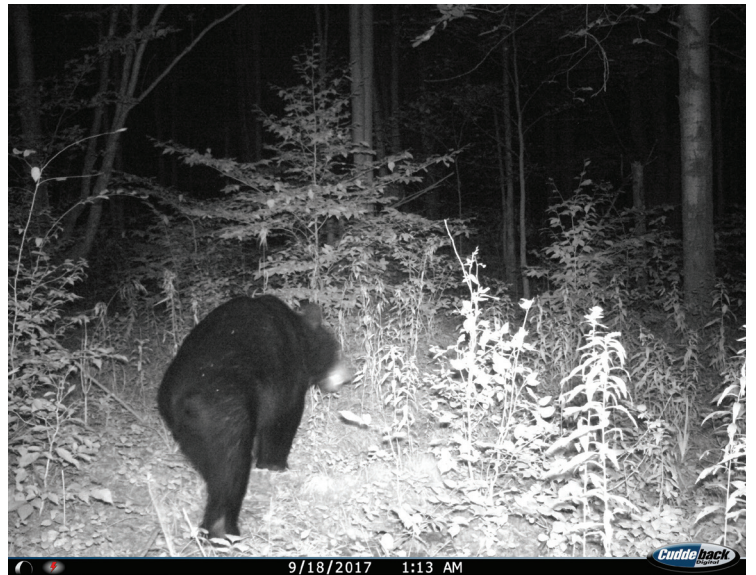
## Attention: Hunters & Land Seekers

**162 ACRES**

Mostly All Wooded With Creek Running Through – Approx. 3,500' Frontage – Great Hunting & Nature Parcels – Offered In 5 Parcels – Ranging From 20 To Over 50 Acres Each - Mineral Rights To Transfer To Buyer  
Steuben & Richmond Twps. – Crawford Co.

**ABSOLUTE AUCTION**, All sells to highest bidder(s) on location:  
**15716 Mercer Rd., Townville, PA 16360**

**Directions:** Take Rt. 77 northeast of Meadville 12 miles to Rt. 408 and east 4 miles to Mercer Rd. and left or Rt. 8 south of Rt. 6 at Union City to Rt. 77 and west to 408 and east. Watch for KIKO signs.



Photos taken off this land!

Come walk land over, they lay real nice, heavy timber has been cut. You'll like these parcels.

Parcel #1, #2 & #3 – 20 acres and 21.2 acres each – creek in rear – all wooded – all adjoining.

Parcel #4 – 49+ acres – creek running through, balance all wooded. Here is a dandy!  
Note: Parcel 1 – 4 all on eastside of road and are adjoining.

Parcel #5 – 52 acres. 774' frontage – all wooded plus creek at one corner. Flag shape. Lays real nice. Across the road from parcel #4.

Minerals transfer, no active leases. All lay nice – level to gently rolling. For questions on financing call Rusty.

Information is believed to be accurate but not guaranteed.



**330.455.9357 • kikoauctions.com**







**KIKO AUCTIONEERS**

2722 Fulton Dr. NW, Canton, OH 44718  
kikoauctions.com

**Saturday – October 28, 2017 – 2:00 PM**

## ATTENTION: HUNTERS & LAND SEEKERS

162 Acres – Mostly All Wooded With Creek Running Through – Great Hunting & Nature Parcels – Offered In 5 Parcels – Ranging From 20 To Over 50 Acres Each - Mineral Rights To Transfer To Buyer Steuben & Richmond Twps. – Crawford Co.



**Members – State and National Auctioneers Association**

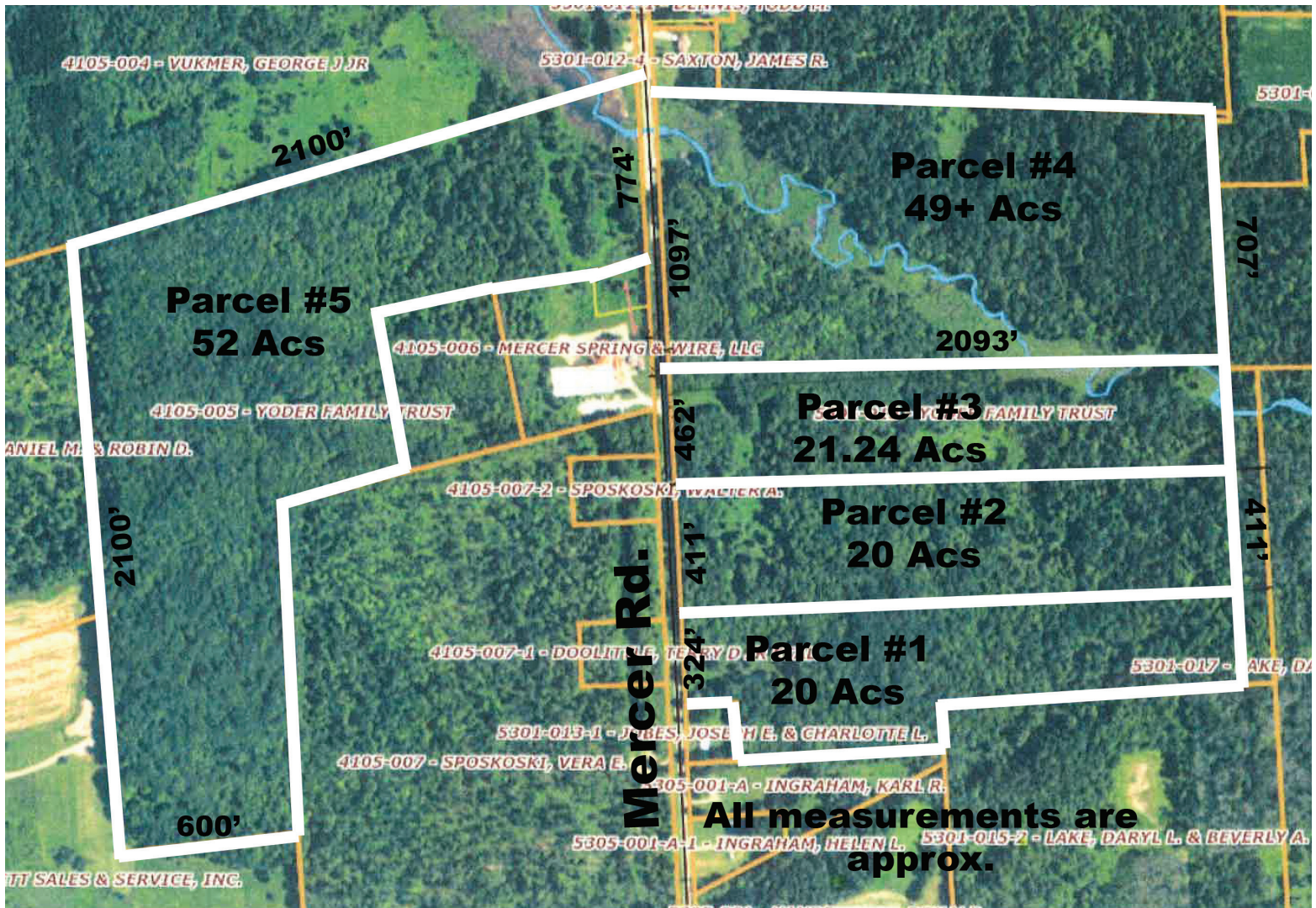


**TERMS ON REAL ESTATE:** 10% down auction day, balance due at closing. A 10% buyer's premium will be added to the highest bid to establish the purchase price, which goes to the seller. Any desired inspections must be made prior to bidding. All information contained herein was derived from sources believed to be correct. Information is believed to be accurate but not guaranteed.

### Auctioneer/Realtor:

Russell T. (Rusty) Kiko, Jr., C.A.I., ext 115, 330-495-0923, #AU-002727L & RS-222810-L.  
Russ Kiko Assoc. #AY000170L.

**Auction By Order Of:** John Yoder Family Trust



**330.455.9357 • kikoauctions.com**

